



newline
Connect. Create. Collaborate.

Connect. Create. Collaborate.

The Next Generation Of Collaboration Is Here.



CONSISTENTLY LEADING THE WAY IN INTERACTIVE TECHNOLOGY

Our many years of experience challenge us to provide the best products, services, and solutions fit for modern workspaces, schools, and corporations. At Newline, we strive to give you smooth and seamless collaboration, always.

Our vision, your future. Get the most out of now.



PRODUCT RANGE



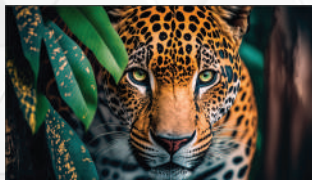
Z *SERIES*



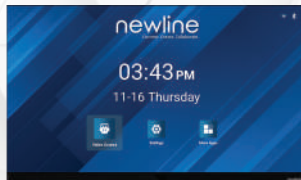
Q *PRO*
SERIES



S *PRO*
SERIES



STV *SERIES*



DV SERIES



newline
canvas



THE NEXT GENERATION OF
COLLABORATION IS HERE
SERIES

All-In-One

Collaboration Solution

55"

65"

75"

86"



USB Type-C
With Power



Antimicrobial
Surface



Secure
Android 11 OS



Eco-friendly
Proximity Sensor



Better
Connectivity



Superior Capacitive
Touch (P-CAP)



Tiltable 4K Wide
Angle Camera



Compatible
with all Devices

SPECIFICATIONS



MODEL	TT-5522Z	TT-6522Z	TT-7522Z	TT-8622Z
Active Screen Size	55"	65"	75"	86"
Colors	1.07Billion (10 bit color)			
Brightness	400 cd/m ²	450 cd/m ²	450 cd/m ²	500 cd/m ²
Contrast Ratio	4000:1	15000:1	15000:1	15000:1
Response Time	4 ms			
Glass Surface Technology	AntiGlare+Anti-Fingerprint Tempered Glass + Antimicrobial Tempered Glass			
Touch Surface	Optical Bonding			
Touch Sensor	Projective Capacitive (PCAP)			
Speaker Max.Power Output	20Wx2 + 15W Subwoofer			
Mic Position	8-mic array - upper front			
Distance	8 m			
Camera Resolution	4K @ 30 Hz / UHD			
Field of View	120° FOV Lenses			
SoC Chipset	Amlogic 311D2			
CPU	A73*4 + A53*4 (4 Core + 4 Core)			
GPU	G52*8 (8 Core)			
RAM	8 GB			
Flash Memory	64 GB			
Android Version	Android 11			
Proximity Sensor	1			



The Future of Education with

Google and
android 13

55"

65"

75"

86"

98"

CERTIFIED Google INTEGRATION



Google
EDLA Certified



USB Type-C
with 65W Power



Android 13 OS
with User Profiles



Camera
Module Capable



Better Connectivity
with Wi-Fi 6



Embedded
20W Speakers



Up to 40
Points of Touch



Compatible
with All Devices

SPECIFICATIONS



MODEL	TT-5523QA	TT-6523QA	TT-7523QA	TT-8623QA	TT-9823QA
Active Screen Size	55"	65"	75"	86"	98"
Brightness	400 cd/m ²	450 cd/m ²	450 cd/m ²	500 cd/m ²	550 cd/m ²
Colors	1.07 Billion (10 bit color)				
Contrast Ratio	15000:1				
Response Time	4 ms				
Glass Surface Technology	Anti-Glare + Anti-Fingerprint + Antimicrobial Tempered Glass				
Touch Points	40 Points (Max)				
Speaker Max.Power Output	20W x 2				
SoC Chipset	Amlogic 311D2				
CPU	A73*4 + A53*4 (4 Core + 4 Core)				
GPU	G52*8 (8 Core)				
RAM	8 GB				
Flash Memory	64 GB				
Android Version	Android 13				
Features	EDLA supported				
Parameters	Wi-Fi 6 +BT 5.2				

S *PRO SERIES*

Elevating Next-Gen Learning with



Android 14

8GB, 320GB*

Zero Bonding

65"

75"

86"



Wi-Fi Module with
Wi-Fi 6 Connectivity



Android 14
8G RAM 64G ROM



Full Range Freq.
20W Speaker



Multi-platform
Compatibility



Powered USB
Type-C



Zero
Bonding

India's first
Android 14

*64GB Default, expandable upto 320GB

SPECIFICATIONS



MODEL	TT-6523S	TT-7523S	TT-8623S
Active Screen Size	65"	75"	86"
Display Colors	10 bit		
Brightness	450 cd/m ²	450 cd/m ²	500 cd/m ²
Contrast Ratio	15000:1		
LCD Response Time	4 ms		
Touch Surface	Anti-Glare + Anti-Fingerprint		
Bonding Type	Zero Bonding		
Max.Power Output	20 W x 2		
Touch Points	40 points (max)		
CPU	Arm Cortex - A55 x 8		
GPU	Quad-core Mali-G52		
RAM	8 GB		
ROM	64 GB		
Android Version	Android 14		
Wi-Fi	Dual Channel 2.4G + 5G, wifi 6 + BT 5.2		
Optional Components	8 Microphone array , 4K camera, 1*15W subwoofer		



STV SERIES

Immersive Cinematic Experience

43" 55" 65" 75" 85" 98"

Without TV Tuner Card



Ultra-thin Bezel



High Screen Display Ratio



4K HD



178° View Angle



Pure Color



Remote Control

SPECIFICATIONS

STV SERIES

MODEL	STV-4324	STV-5524	STV-6524	STV-7524	STV-8524	STV-9824
Active Screen Size	43"	55"	65"	75"	85"	98"
Response Time	4 ms					
Refreshing Frequency	120 Hz					
Display Color	1.07 Billion (10bit + FRC)					
Brightness	450 nits	500 nits	550 nits	550 nits	600 nits	650 nits
Contrast Ratio (Typ.)	15000:1				15000:1	15000:1
Viewing Angle	178°					
Operation Time	24 x 7					
Speaker Power Output	2 x 10 W				2 x 15 W	
Rear Input Port	HDMI In 2.0 x 1 (ARC) , HDMI in 2.0 x 2 , USB-A 2.0 x 1, USB-A 3.0 x 1, LAN In (RJ45) x 1, AV In x 1					
Rear Output Port	S/PDIF Out x 1, Audio Output (Jack 3.5 mm) x 1					
Embedded System	Android 11					
Chipset	RTK2851M					
CPU	ARM Cortex-A55 x 4					
GPU	ARM Mali-G31 MC2					
RAM	2 GB					
ROM	16 GB					
Wi-Fi / Bluetooth	Wi-Fi 5, Bluetooth					
VESA Mount	300 x 300 mm		400 x 300 mm		500 x 400 mm	



DV SERIES

LARGE FORMAT ALL-IN-ONE

Direct View LED Display Solution



6mm Ultra-Thin
Frame



Ultra High
Refresh Rate



120"-180" Display
HD Resolution



Plug & Play
Design



Integrated
Speakers



Lightweight
All-In-One Design

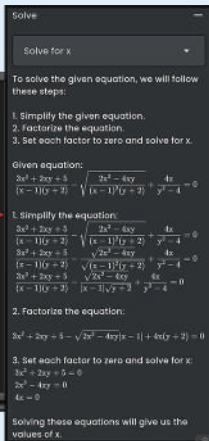
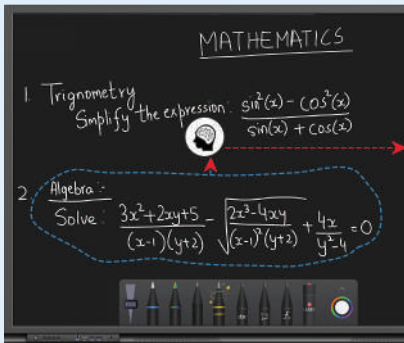
CAST

VISUAL COMMUNICATION SOLUTION

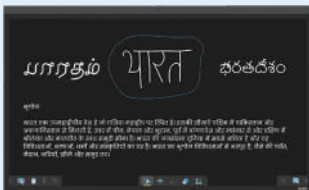
SPECIFICATIONS

DV SERIES

MODEL	DV-12023H	DV-15023H	DV-18023H
Specification size (inches)	120"	150"	180"
Resolution	1920 x 1080	1920 x 1080	1920 x 1080
Pixel Density	519,438 dots/m ²	332,440 dots/m ²	230,861 dots/m ²
Contrast Ratio	3000:1	3000:1	3000:1
Pixel Pitch	1.38 mm	1.73 mm	2.08 mm
Pixel Configuration	1R 1G 1B		
Interface	HDMI x 2, USB 2.0 x 2, USB 3.0 x 1, SPDIF out x 1, LAN In x 1, RS232 x 1		
Material and Color	Black, GOB		
Brightness	Up to 550 nits		
Viewing Angle	Horizontal: 160°±10 ; Vertical: 160°±10		
Color Processing Depth	24 bit		
Refresh Rate	3840 Hz		
Lifespan	100,000 hours		
Newline Cast	Included		
Newline VCS Digital Signage	Supported		



Introducing Newline Canvas: India's First GEN AI-Based Whiteboarding and Annotation Software. Powered by cutting-edge Generative Pre-trainer Transformer technology (GPT), Newline Canvas revolutionizes the interactive whiteboarding experience, bidding farewell to static brainstorming and ushering in dynamic collaboration like never before.



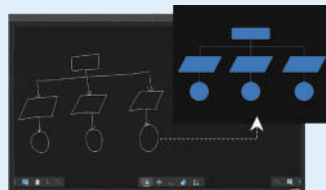
Unlock Multilingual Learning

Supporting over 194 international languages with more than 15 vernacular languages like Hindi, Tamil, Telugu, Marathi, Punjabi, Gujarati, Bengali etc.



AI Pen

Amplify content creation with AI-powered recognition of shapes, images & text.



From Doodles to Diagrams

Effortlessly convert freehand sketches into clear diagrams, enhancing clarity and readability of user-generated content for effective communication and understanding.



3D Simulation Video Library

Enhance your lessons with a vast library of resources covering all subjects like Maths, Physics, Chemistry, Botany, Zoology etc. A repository of 3000 videos, 1000 simulations, 20K 3D models, and Geogebra Math Tools are seamlessly integrated in the platform for these subjects.

Interactive Periodic Table

Explore elements effortlessly with clickable elements for detailed information retrieval and access to 3D atomic models, enriching chemistry lessons.



Shapes wizard: Advanced Shapes @ your finger tip

Visualize mathematical concepts with precision using Newline Canvas graph plotting feature, enhancing comprehension and retention.

Youtube & Google Integration

Seamlessly integrate Youtube and Google content on the whiteboard for an immersive teaching and whiteboarding experience.



newline

Connect. Create. Collaborate.

AUTHORISED CHANNEL PARTNER



GET IN TOUCH

HiteVision

Newline Interactive is part of the HiteVision Group

Chennai

Room No. 202, 203, 211
No.37, Workafella, TTK Road, Alwarpet,
Chennai-600018, Tamil Nadu

Gujarat

📍 104, 1st Floor, Shilp Arista,
Opposite Stellar, Sindhu
Bhavan Road, Thaltej,
Ahmedabad 380015, Gujarat

Delhi

📍 Unit No. A-717, 7th
Floor, DLF Tower A,
Jasola District Centre,
New Delhi- 110025

Kolkata

📍 RAKVA Tower 3A, Ram
Mohan Mullick Garden Lane,
3rd Floor, Suit No - 309,
Kolkata, West Bengal 700010

Mumbai

📍 1st Floor, B-107, Kanakia
Wall Street, Chakala, Andheri
Kurla Road, Andheri East
Mumbai-400059, Maharashtra.

Hyderabad

📍 6-3-871, Ground Floor,
Snehalatha Building,
Greenlands Rd, Begumpet,
Hyderabad, Telangana 500016



1-800-419-0309 | www.newlineinteractive.in